

Transitioning to a New Public Catalog: Lessons Learned

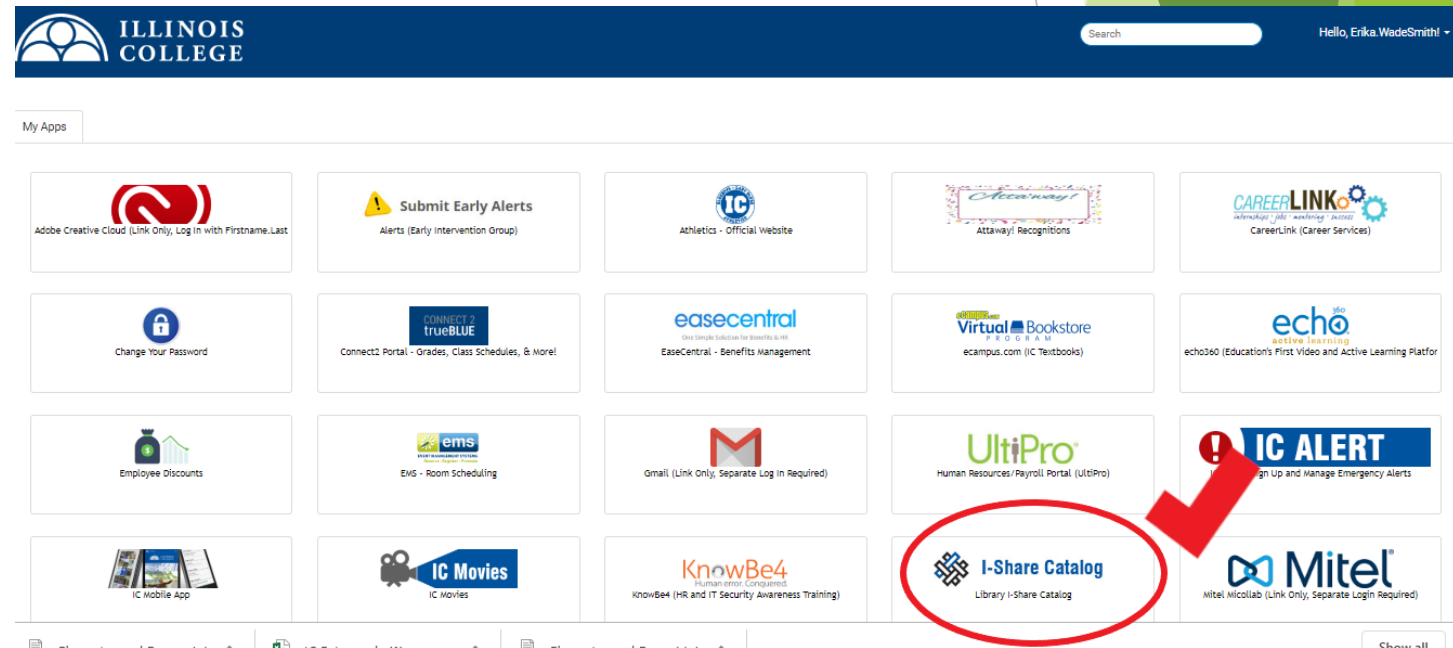
Erika Wade Smith: Digital Services Librarian,
Schewe Library, Illinois College

Context: Illinois College

- ▶ Founded in 1829
- ▶ Undergraduate only
- ▶ Located in Jacksonville, IL (Rural!)
- ▶ 85% of students live on campus
- ▶ 959 FTE
- ▶ Approximately 80 faculty members

Why make a change?

- ▶ Streamlining iShare for patrons
- ▶ Single Sign Integration
- ▶ Making a necessary change during a slower time




Putting together a timetable

- ▶ Flexible deadline
- ▶ Aimed for summer
- ▶ Requested stakeholder feedback on the timing, and incorporated it into the plan
- ▶ (Still ended up fairly spectacularly behind schedule)
- Lesson learned: involve all departments as fully as possible in developing a timetable, but be prepared to be flexible

Training staff and student workers

- ▶ Small library staff allows for direct communication in productive meetings
- ▶ Invited library staff to test out interface before it went live
 - ▶ (Reminders were key)
- ▶ Carli documentation is a great resource
- Lesson learned: student workers are often the first line of library “defense”, and need to be thoroughly trained on any changes.



Consortium of
Academic and Research
Libraries in Illinois

NEWSJOBSEMAIL LISTSMEMBER DIRECTORYCONTACT

PRODUCTS & SERVICESMEMBERSHIPEVENTSGOVERNANCEABOUT

Search

PRODUCTS & SERVICES / I-SHARE / OPAC / NEW VUFIND OVERVIEW AND FREQUENTLY ASKED QUESTIONS (FAQ)


OVERVIEWDOCUMENTATIONLIAISONS GUIDEANNUAL STATISTICSSEARCH I-SHARE >>

New VuFind Overview and Frequently Asked Questions (FAQ)

Last revised March 8, 2019

New VuFind Overview

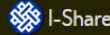
VuFind is an alternative interface to I-Share catalogs, offering users what may be a better way to search and discover library resources.

- VuFind was developed initially at Villanova University for use in libraries, which is why it is named "VuFind".
- CARLI has adapted VuFind so that it will serve the unique needs of the consortial community, and serve libraries of all sizes within

PRODUCTS & SERVICESMEMBERSHIPEVENTSGOVERNANCEABOUT

S

PRODUCTS & SERVICES / I-SHARE / OPAC / VUFIND MOBILE INTERFACE


OVERVIEWDOCUMENTATIONLIAISONS

VuFind Mobile Interface

A VuFind mobile interface for I-Share local catalogs is available at
→ <http://m.carli.illinois.edu>. Library staff and users without a mobile device on hand can view the mobile interface on a desktop or laptop computer.

In addition to searching and requesting in the local catalog, the VuFind mobile interface allows users to search course reserves and to access their account. Users should log in with their existing VuFind account and may easily exit from the mobile version to the full I-Share site at any time during their transaction, via the Exit link located in the footer on each screen.

CARLI will not yet automatically direct mobile users to the new interface. I-Share libraries may choose whether to direct users to the new mobile interface web address. Libraries that want to modify their local mobile interface may do so → [via the customization form](#).

Frequently Asked Questions about VuFind Accounts or Logins

expand / collapse all

Do I already have an account?

Is my catalog account the same as my _____ account?

Can I access online library resources with my catalog account?

When I try to create my account, the catalog says, "That username is already taken." Does that mean I already have an account?

I used to be able to use the catalog but I haven't been able to log on since last month/semester/year. How do I fix this?

May I have more than one account in the catalog?

SYSTEM STATUS

All Systems Active: VuFind, Voyager, Web pages


POPULAR DOCUMENTATION TOPICS

I-Share via Z39.50

VuFind Login FAQ

OPAC Usage Data

LATEST NEWS / ALL NEWS



Consortium of
Academic and Research
Libraries in Illinois

NEWSJOBSEMAIL LISTSMEMBER DIRECTORYCONTACT

PRODUCTS & SERVICESMEMBERSHIPEVENTSGOVERNANCEABOUT

Search

NEW VUFIND OVERVIEW WEBINAR

New VuFind Overview Webinar

Full Calendar

Training Events

Info for Webinar Participants

Info for Webinar Presenters

Wednesday, May 9, 2018 – 2:00pm to 3:00pm

On Wednesday, May 9, 2018 from 2:00-3:00pm, CARLI staff will present a webinar for I-Share Libraries about the → [New VuFind catalog](#).

There is no registration required for this webinar, and it is open to all I-Share library staff. Multiple staff members are encouraged to attend together from a single computer or use a computer projector when possible.

This webinar will cover the following topics:

- Current status and future plans for New VuFind
- Frequently Asked Questions
- New Features in New VuFind
- Differences between New VuFind, VuFind 0.6, and Classic WebVoyage

Encouraging buy in and (finally!) introducing the changes

- ▶ Never underestimate the power of word of mouth: especially when working with power-users
- ▶ Sent an enthusiastic campus-wide email with screenshots and instructional videos
- ▶ Prepared staff to be especially responsive and quick to troubleshoot any problems immediately after the rollout
- ▶ Carli worked with us to create customized text on the catalog and iShare homepages that provided both instructions, and points of contact



ILLINOIS COLLEGE

Schewe Library

All Fields ▾

Local Catalog Only ▾

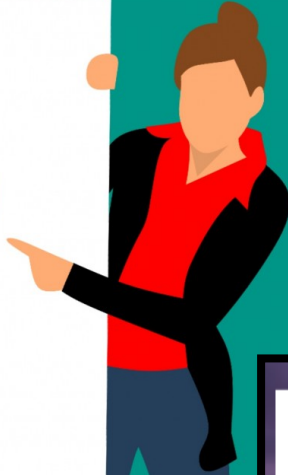
 Find

Advanced

Try the new VuFind interface to search Schewe Library's catalog and the I-Share catalog.

If you're using VuFind for the first time and want to access your personal Illinois College account to request or renew items, click the Login button on the upper right-hand side of the screen. You'll need to log in through the Single Sign On, then enter your library barcode number from the back of your ID (this is different from your ID number). On return visits, just click Login and sign in through SSO.

If you need assistance, or if you are not an Illinois College student, faculty, or staff member, please contact the circulation desk for assistance.



Library I-Share & Database Update

Illinois College Library x

Illinois College Library/New VuFind Transition x



to IC, IC ▾

Wed, Aug 8, 2018, 11:08 AM



Dear Colleagues,

As term is fast approaching, I thought I'd update you on some new developments at Schewe Library:

I-Share Catalog

For those new to IC, I-Share is a shared library catalog which allows members of the IC community (students, faculty, staff) to request books (and other materials) from over 90 academic libraries in Illinois. Once requested, the materials are sent to Schewe Library and you can pick them up at the library's circulation desk. I-Share is free to use, very popular on campus, and can be found on [Schewe Library's homepage](#).

Over the past summer, the I-Share catalog was updated to a new iteration, and amongst other things, **logging in to I-Share now uses your campus Single Sign On ID!** For those who have forgotten their I-Share passwords over the years, this will doubtlessly be good news. The only downside is that you have to do a **one-time input of the barcode on the back of your campus ID** for I-Share to verify who you are. The process is simple, however, and I've attached a short video showing you how to do this.

Overall, how did the switch effect public services at Schewe Library?

- ▶ Minimal disruption to regular library services
- ▶ Multiple access points to catalog
- ▶ Users no longer forget their iShare passwords
- ▶ iShare numbers as an indicator that the new interface is working
- ▶ Search function is still a bit different than previously, but this is primarily noticed by librarians
- ▶ Link resolver visibility and functionality improved
- ▶ Interface with other vendors still occasionally a bit off



digital
learning
center

Thank you for
your time!